



GAT MONTHLY MEMBERSHIP PROGRESS REPORT

Results as of: 4/30/2021

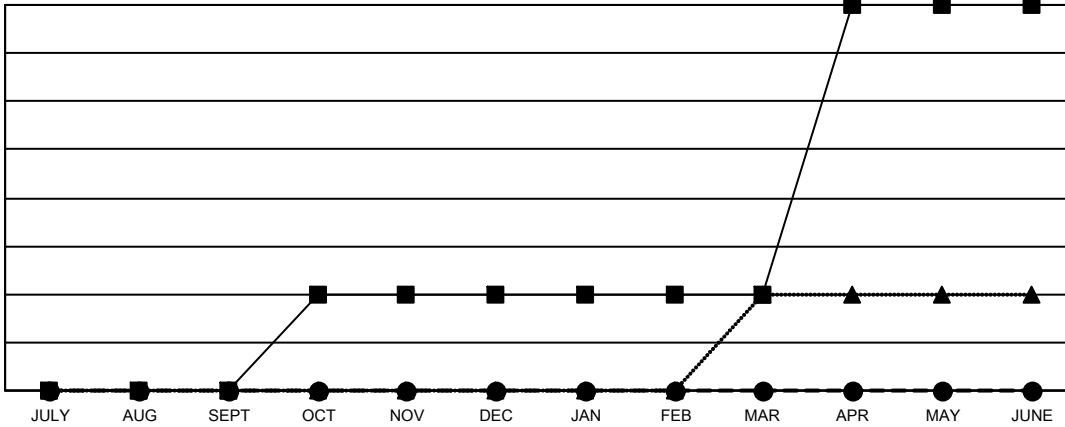
Multiple District 410

LOCATION: REP OF SOUTH AFRICA

| Clubs | | | |
|-----------------------|---------------|-----------|---------------|
| RESULTS FOR 2020-2021 | | | |
| QUARTER | NEW CLUB GOAL | NEW CLUBS | DROPPED CLUBS |
| JULY/AUG/SEPT | 0 | 0 | 0 |
| OCT/NOV/DEC | 1 | 0 | 1 |
| JAN/FEB/MAR | 0 | 0 | 3 |
| APR/MAY/JUNE | 3 | 0 | 1 |

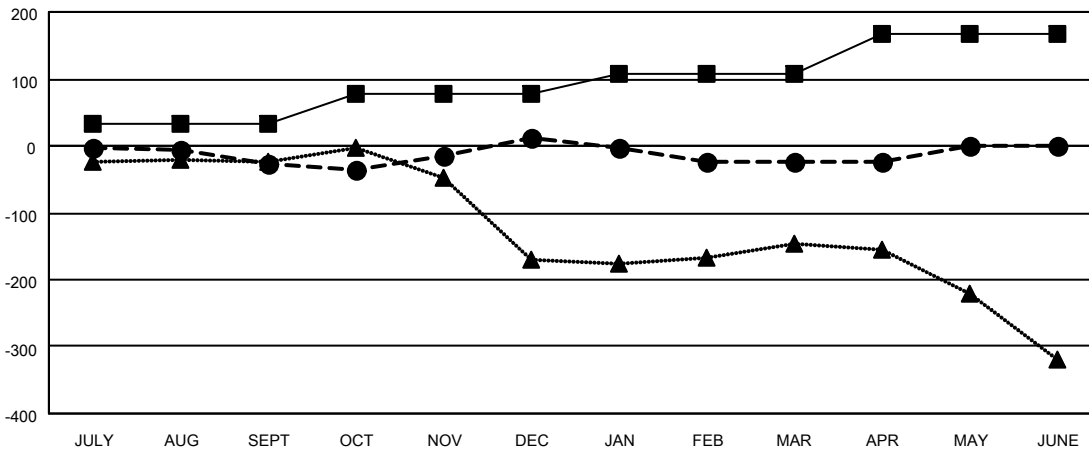
| Members | | | |
|-----------------------|------------------------|----------------------|--|
| RESULTS FOR 2020-2021 | | | |
| QUARTER | MEMBER GROWTH NET GOAL | MEMBER GROWTH ACTUAL | DROPPED MEMBERS ACTUAL (including transfers) |
| JULY/AUG/SEPT | 34 | 56 | 65 |
| OCT/NOV/DEC | 43 | 162 | 114 |
| JAN/FEB/MAR | 31 | 43 | 73 |
| APR/MAY/JUNE | 60 | 31 | 27 |

GOALS AND ACTUAL NEW CLUBS CUMULATIVE



- - CURRENT YEAR GOALS FOR NEW CLUBS
- - CURRENT YEAR ACTUAL NEW CLUBS
- ▲ - LAST YEAR ACTUAL NEW CLUBS

GOALS AND ACTUAL MEMBERS CUMULATIVE



- - MEMBER GROWTH NET GOAL
- - MEMBER GROWTH ACTUAL
- ▲ - LAST YEAR MEMBERSHIP ACTUAL

DROPPED CLUBS: 5

70 CLUBS OF 132 ADDED 1 OR MORE NEW MEMBERS

| GENDER DISTRIBUTION | |
|---------------------|----------------|
| MALE | 1,108 (54.39%) |
| FEMALE | 929 (45.61%) |

| DROPPED MEMBERS | |
|-----------------|------------|
| DECEASED | 35 |
| CLUB CANCELLED | 31 |
| OTHER | 213 |
| TOTAL | 279 |

[CLICK HERE FOR CUMULATIVE MEMBERSHIP DATA](#)

| | |
|---------------------------------|-----|
| TOTAL FAMILY UNIT MEMBERS | 543 |
| FAMILY MEMBERS PAYING HALF DUES | 282 |